

[Small-Scale Multi-Unit Housing | District of Saanich](#)

[SSMUH Guide](#)

[Info Sheet – How many units can I build?](#)

[SSMUH Project Data Table](#)

For additional background information, read the Council Report and watch the presentation to Council.

SSMUH Info Sessions will be recorded and added to the webpage.



SSMUH Webinars

November 14th 12:00pm – 1:30pm

November 14th 7:00pm – 8:30 pm

Join us to:

- Learn about new Zoning Bylaw amendments for SSMUH
- Discover tools and resources to help you determine what you can build on your property
- Understand how to apply for SSMUH

Visit the [Neighbourhood Homes -Small Scale Multi-Unit Homes project page](#) to sign up for a webinar.



Secondary Corridors and Neighbourhood Hubs

Background

- Saanich Neighbourhoods are still reliant on single-vehicle transport to conduct most daily activities such as childcare, groceries, medical services, etc.
- The OCP integrates the 15-minute community approach into Saanich's planning framework - key services and amenities are within a 15-minute walk
- The Secondary Corridors and Hubs can bring a mix of uses in Saanich Neighborhoods, and densities that support small business



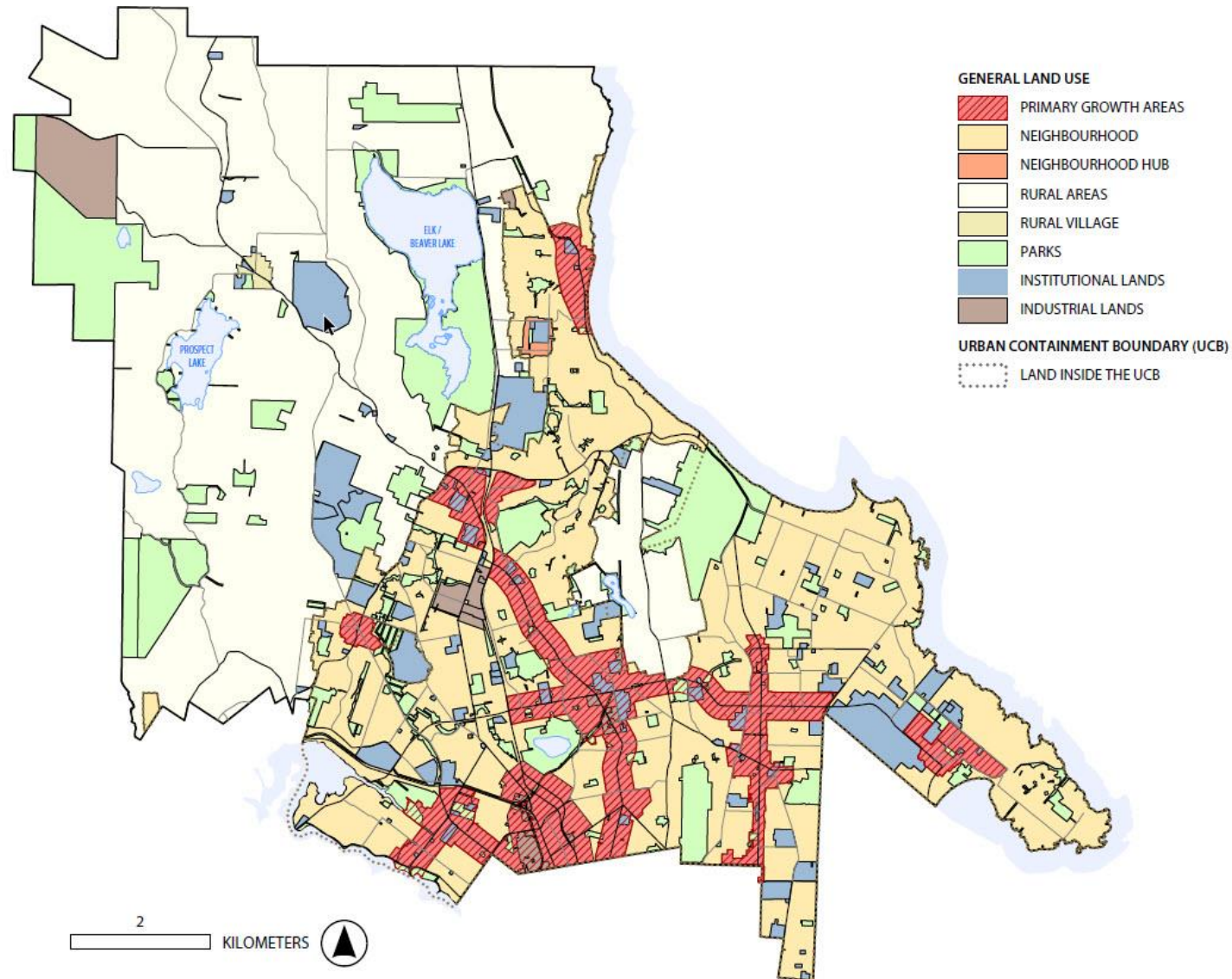
“Let’s meet for a coffee.”

“I’ll pick up milk on the way home.”

“The kids can walk to school.”

“We are downsizing but staying in the neighbourhood.”

“We could walk to the corner store...”



Secondary Corridors - provide opportunities to increase the density and diversity of housing typologies along sections of designated corridors



Hubs - in addition to housing, will provide options for commercial uses, services, and employment space in clustered, designated sections



Project Inputs

- OCP engagement
- Complete Communities (Provincially Funded project)
- Community and Stakeholder Engagement
- CCV planning processes
- Economic Development Strategy
- Retail Study and Land Capacity
- Additional direction in Urban Forest Strategy, Climate Plan, etc.



Project Timeline and Inputs

- Terms of Reference to Council in December
- Community Planning Process
 - 3 phases of community engagement
 - Mapping and analysis of community completeness
 - Assess options for small-scale commercial
- Deliverables
 - OCP Land Use Designations
 - Secondary Corridors and Hubs Strategy
- Approx. 15 month timeline

Questions?

